



Shown with optional hood covers

## PLEXLINE<sup>®</sup>

### Advanced Composites for Advanced Form and Function

Combining the high performance of composite materials with the benefits of high-speed doors, the Plexline<sup>®</sup> roll-up door is designed for high-traffic, interior applications where durability, speed and visual impact are paramount. Soft lines and sleek design help create a polished look.

Fiberglass composite materials offer strength, long-life and cleanability. The Plexline offers high aesthetics and the durability of stainless steel at a remarkably low price.



Shown with optional hood cover

#### Durable Composite

- Strong composite materials are corrosion-resistant, chemical-resistant and highly impact-resistant

#### Sleek Design

- Smooth lines and a curvilinear structure
- Side columns have a soft blended finish with highlights to mimic stainless steel
- Optional composite plastic hood

#### Safety is Standard

- Full-width vision panel, Pathwatch<sup>®</sup> Safety Light System, dual photo eyes and bottom bar reversing edge provide enhanced safety

#### Smooth Operation

- Advanced System 4<sup>®</sup> door controller enables precise door positioning, speed adjustment and control of all door functions

#### Full Perimeter Seal

- Edge-to-edge top brush seal
- Dual brush seals in side columns
- Soft pliable vinyl loop seal along floor

# PLEXLINE<sup>®</sup>

## HIGH-PERFORMANCE COMPOSITE ROLL-UP DOOR



Cold Storage



Food and Beverage



Mfg/Dist/  
Warehousing

### Size/Dimensions

- Up to 16'W x 15'H
- 19" (w/o hood) or 24" (w/hood) headroom above lintel
- 15" head projection
- 7" side column projection
- 9.5" (w/o hood) or 11" (w/hood) side clearance, non-drive side
- 17.5" (w/o hood) 19" (w/hood) side clearance, motor side
- Motor placement on right or left side

### Travel Speed

- Opening speed up to 50 inches per second

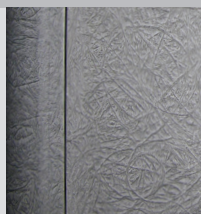
### Operation

- Variable-speed AC drive provides soft acceleration and deceleration
- Independent opening and closing speeds provide flexibility to meet any application

### Side Columns

- Fiberglass composite side frames
- Open interior of side columns allow for additional wiring and optional counterweighted lift-assist system

Composite materials for cleanability and durability of stainless steel



### Perimeter Seals

- Full-height front and rear brush seals in each side column seal against both sides of the panel
- Vinyl loop forms a tight seal on the floor
- Top seal completes the full perimeter seal

### Electrical Controls

- System 4<sup>®</sup> controller housed in a NEMA 4X rated enclosure with factory set parameters
- Intelligent processor monitors and controls power consumption during operation
- Advanced self-diagnostics for troubleshooting

System 4 shown with optional rotary disconnect



Standard maximum sizes shown; larger sizes may be available upon request.

### Panel Design

- 71 oz., 2-ply Rylon<sup>®</sup> panel material
- Full-width replaceable vision panel
- Aluminum wind ribs

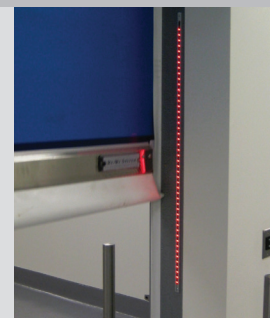
### Break-Away™ Bottom Bar

- Quick-Set™ Break-Away™ tabs allow the wireless bottom bar to release in either direction without damaging the door
- Dual cutoff switches automatically shut off motor if bottom bar is impacted
- Auto reset with a push of a button after bottom bar is aligned

### Safety is Standard

- Pathwatch<sup>®</sup> Safety Light System
- Dual thru-beam photo eyes
- Sensitivity-adjustable pneumatic reversing edge
- Ry-Wi<sup>®</sup> Wireless System

Pathwatch Safety Light System shown with optional stainless steel bottom bar and vinyl seals



### Warranty

- Two-year limited warranty on mechanical and electrical components
- Three-year limited warranty on 2-ply Rylon panel material



### Options

- 3-ply Rylon, USDA/FDA-compliant or tear-resistant vinyl door panel with multiple color options
- Composite or aluminum hood and motor cover
- Fiberglass wind ribs
- IP65 severe-duty motor
- Stainless steel-clad bottom bar
- Vinyl weatherseals
- Counterweighted lift-assist system

American Owned, American Made



◀ Watch All Rytec Testimonials

Specifications subject to change  
© 2024 Rytec, a Nucor company LIT081924

RytecDoors.com  
888-GO-RYTEC

info@ryteccdoors.com  
P: 262.677.9046

W223N16601 Cedar Parkway  
Jackson, WI 53037-0403

**RYTEC**  
a NUCOR<sup>®</sup> company